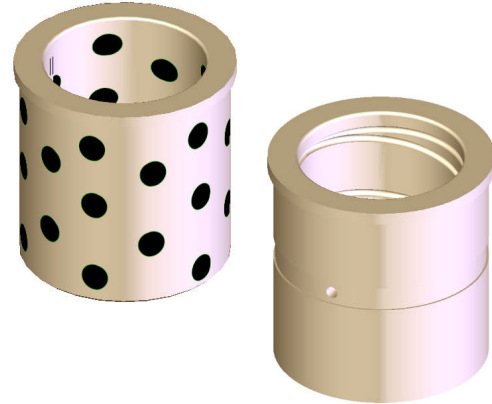


Hole & OD groove omitted on graphited Bushings



With Graphite Plugs

L	Nominal I.D.							
	3/4	7/8	1	1 1/4	1 1/2	2	2 1/2	3
0.875	S750-7G	S875-7G	S1000-7G	S1250-7G	S1500-7G			
1.375	S750-11G	S875-11G	S1000-11G	S1250-11G	S1500-11G	S2000-11G	S2500-11G	
1.875	S750-15G	S875-15G	S1000-15G	S1250-15G	S1500-15G	S2000-15G	S2500-15G	
2.375	S750-19G	S875-19G	S1000-19G	S1250-19G	S1500-19G	S2000-19G	S2500-19G	
2.875	S750-23G	S875-23G	S1000-23G	S1250-23G	S1500-23G	S2000-23G	S2500-23G	
3.375	S750-27G	S875-27G	S1000-27G	S1250-27G	S1500-27G	S2000-27G	S2500-27G	S3000-27G
3.875	S750-31G	S875-31G	S1000-31G	S1250-31G	S1500-31G	S2000-31G	S2500-31G	S3000-31G
4.375	S750-35G	S875-35G	S1000-35G	S1250-35G	S1500-35G	S2000-35G	S2500-35G	
4.875	S750-39G	S875-39G	S1000-39G	S1250-39G	S1500-39G	S2000-39G	S2500-39G	S3000-39G
5.875	S750-47G	S875-47G	S1000-47G	S1250-47G	S1500-47G	S2000-47G	S2500-47G	S3000-47G
D	0.7505	0.8755	1.0005	1.2505	1.5005	2.0005	2.5005	3.0005
A	1.1255	1.2505	1.3755	1.6255	2.0005	2.5005	3.2505	3.7505
B	1.302	1.427	1.552	1.802	2.177	2.677	3.427	3.990

With Grease Grooves

L	Nominal I.D.								L2
	3/4	7/8	1	1 1/4	1 1/2	2	2 1/2	3	
0.875	S750-7P	S875-7P	S1000-7P	S1250-7P	S1500-7P				
1.375	S750-11P	S875-11P	S1000-11P	S1250-11P	S1500-11P	S2000-11P	S2500-11P		0.56
1.875	S750-15P	S875-15P	S1000-15P	S1250-15P	S1500-15P	S2000-15P	S2500-15P		0.56
2.375	S750-19P	S875-19P	S1000-19P	S1250-19P	S1500-19P	S2000-19P	S2500-19P		1.56
2.875	S750-23P	S875-23P	S1000-23P	S1250-23P	S1500-23P	S2000-23P	S2500-23P		1.56
3.375	S750-27P	S875-27P	S1000-27P	S1250-27P	S1500-27P	S2000-27P	S2500-27P	S3000-27P	1.56
3.875	S750-31P	S875-31P	S1000-31P	S1250-31P	S1500-31P	S2000-31P	S2500-31P	S3000-31P	1.56
4.375	S750-35P		S1000-35P	S1250-35P	S1500-35P	S2000-35P	S2500-35P		1.56
4.875			S1000-39P	S1250-39P	S1500-39P	S2000-39P	S2500-39P	S3000-39P	1.56
5.875			S1000-47P	S1250-47P	S1500-47P	S2000-47P	S2500-47P	S3000-47P	1.56
D	0.7505	0.8755	1.0005	1.2505	1.5005	2.0005	2.5005	3.0005	
A	1.1255	1.2505	1.3755	1.6255	2.0005	2.5005	3.2505	3.7505	
B	1.302	1.427	1.552	1.802	2.177	2.677	3.427	3.990	

Materials: Aluminum Bronze

Tolerances: D, A: +.0005/.0000; L: +0/-0.06; B: +0/-0.030